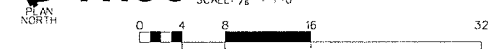


A100 BUILDING ONE - FLOOR PLAN



LEGEND	
SUITE 100	975 SF
SUITE 105	1860 SF
SUITE 106	1042 SF
SUITE 108	286 SF
SUITE 110	372 SF
SUITE 115	723 SF
SUITE 130	200 SF
SUITE 132	349 SF
SUITE 135	929 SF
SUITE 136	348 SF
SUITE 137	429 SF
SUITE 139	295 SF
SUITE 140	320 SF
SUITE 142	975 SF
SUITE 145	2407 SF
SUITE 150	350 SF
TOTAL	11,860 SF
BUILD. TOTAL	14,456 SF

THE GENECOV GROUP
 OIL & GAS - REAL ESTATE
 P.O. BOX 182450 TYLER, TEXAS 75713-2450
 (903)309-8844 (903)309-8866 FAX

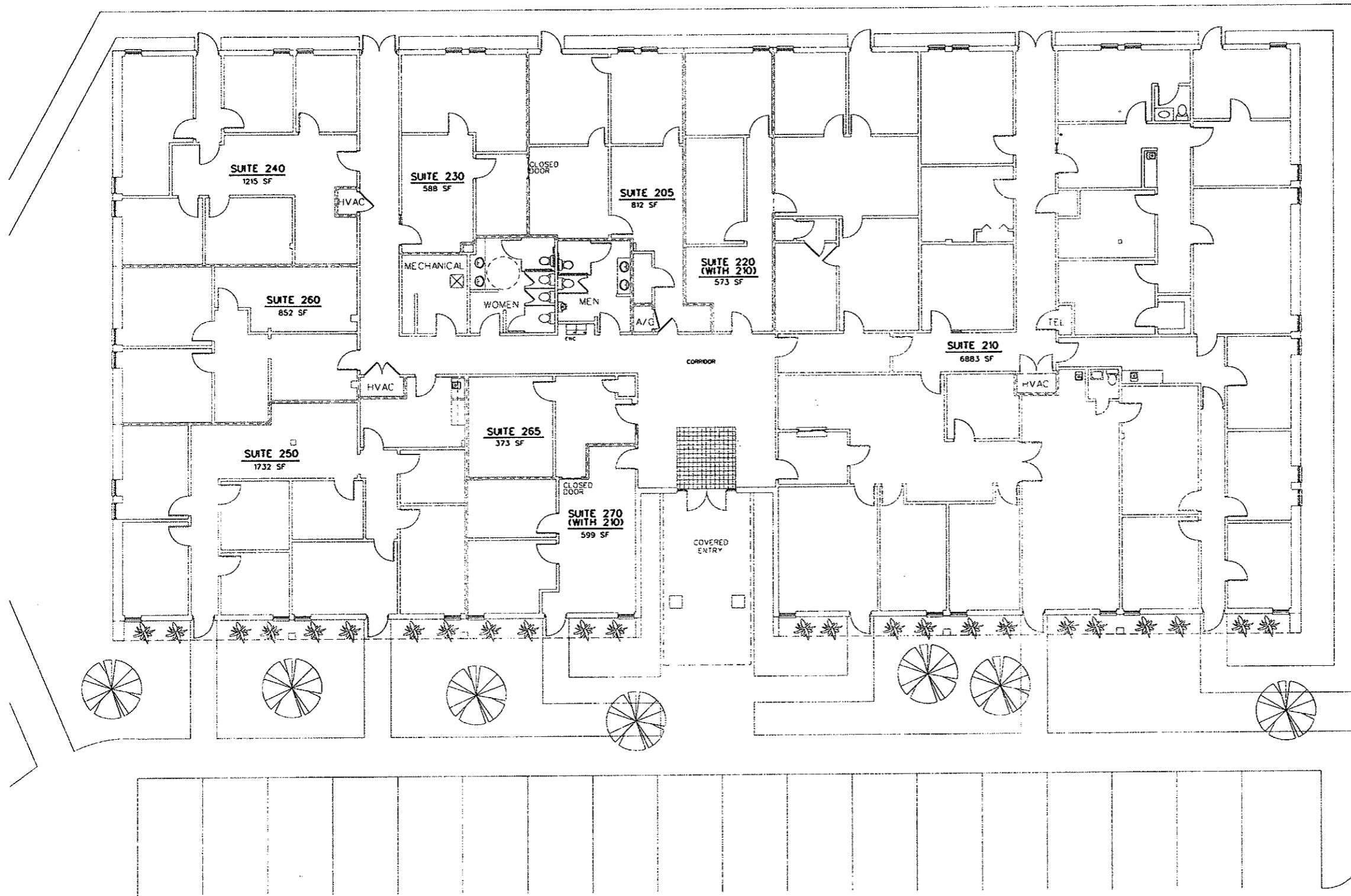


Paluxy Square Office Complex - Bldg. 1
The Genecov Group
 Smith County
 Tyler, Texas

PROJECT:	PALUXY SQUARE
BUILDING:	1
DRAWN BY:	KDP
DATE:	09/08/16
REVISION:	1607
SHEET:	EXISTING PLAN

A1
 SHEET 1 OF 5

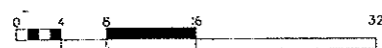
© 2016 The Genecov Group. All rights reserved. No part of this document may be reproduced without written consent of the publisher.



LEGEND	
SUITE 205	• 812 SF
SUITE 210	• 6883 SF
SUITE 220	• 573 SF
SUITE 230	• 588 SF
SUITE 240	• 1215 SF
SUITE 250	• 1732 SF
SUITE 260	• 852 SF
SUITE 265	• 373 SF
SUITE 270	• 599 SF
TOTAL	• 13627 SF
BULD. TOTAL	15590 SF

A200 BUILDING TWO- FLOOR PLAN

SCALE: 1/4" = 1'-0"



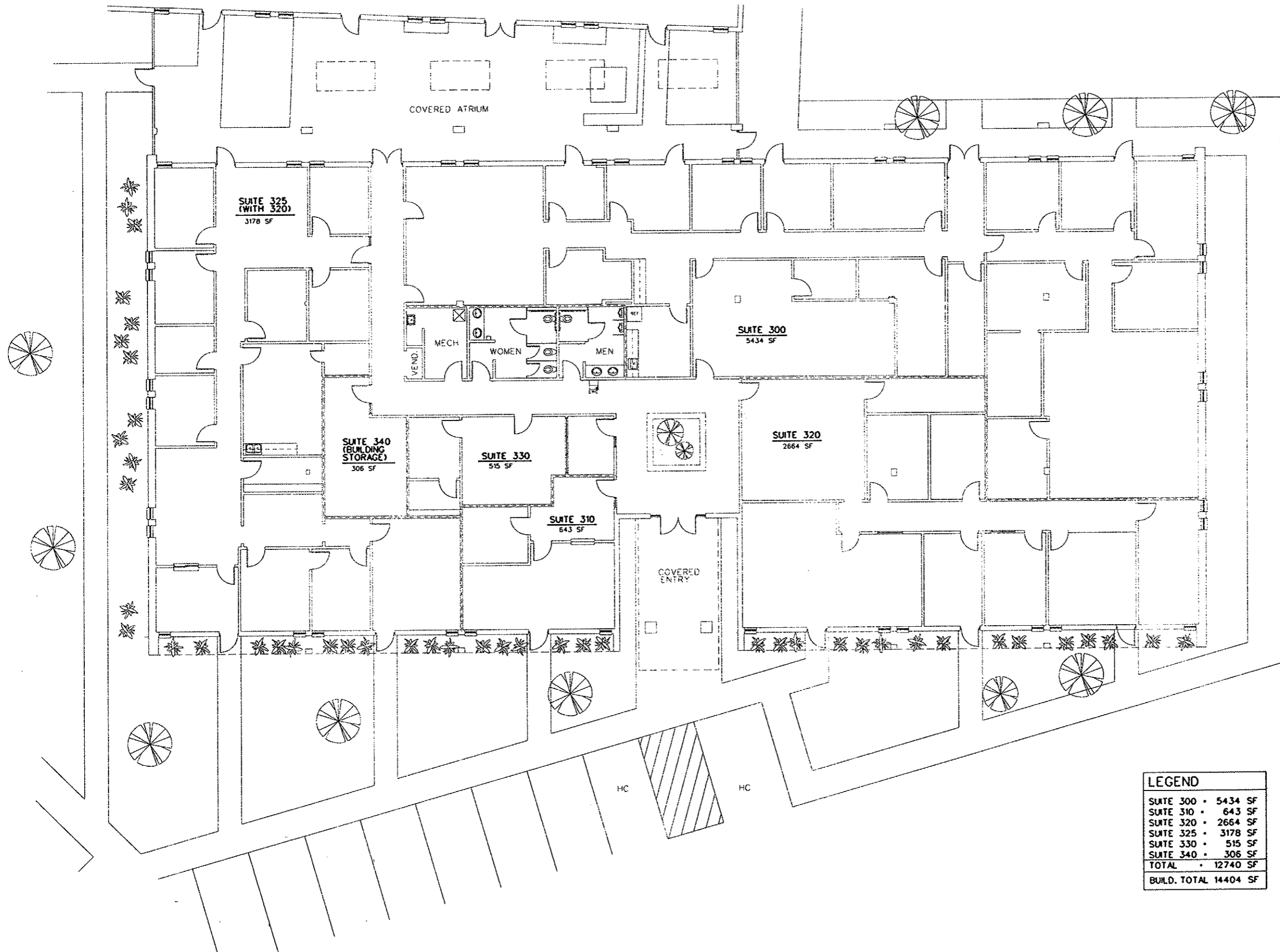
© 2011 The Genecov Group. All rights reserved. The reproduction, copying or other use of this material in whole or part without written consent is prohibited.

PROJECT:	PALUXY SQUARE
BUILDING:	BUILDING 3
DRAWN BY:	KDP
DATE:	02/01/11
RE NO.:	1607
REVISION:	
SHEET:	EXISTING PLAN

A2
SHEET 2 OF 5

THE GENECOV GROUP
 OIL & GAS • REAL ESTATE
 P.O. BOX 132450 TYLER, TEXAS 75713-2450
 (903)609-8844 (903)609-8866 FAX

PALUXY SQUARE OFFICE COMPLEX - BLDG. 3
The Genecov Group
 Smith, County
 Tyler, Texas



LEGEND	
SUITE 300	• 5434 SF
SUITE 310	• 643 SF
SUITE 320	• 2664 SF
SUITE 325	• 3178 SF
SUITE 330	• 515 SF
SUITE 340	• 306 SF
TOTAL	• 12740 SF
BUILD. TOTAL	14404 SF

A300 BUILDING THREE- FLOOR PLAN
 SCALE: 1/8" = 1'-0"
 0 4 8 16 32

THE GENECOV GROUP
 OIL & GAS • REAL ESTATE
 P.O. BOX 132450 TYLER, TEXAS 75713-2450
 (903)609-8844 (903)609-8866 FAX

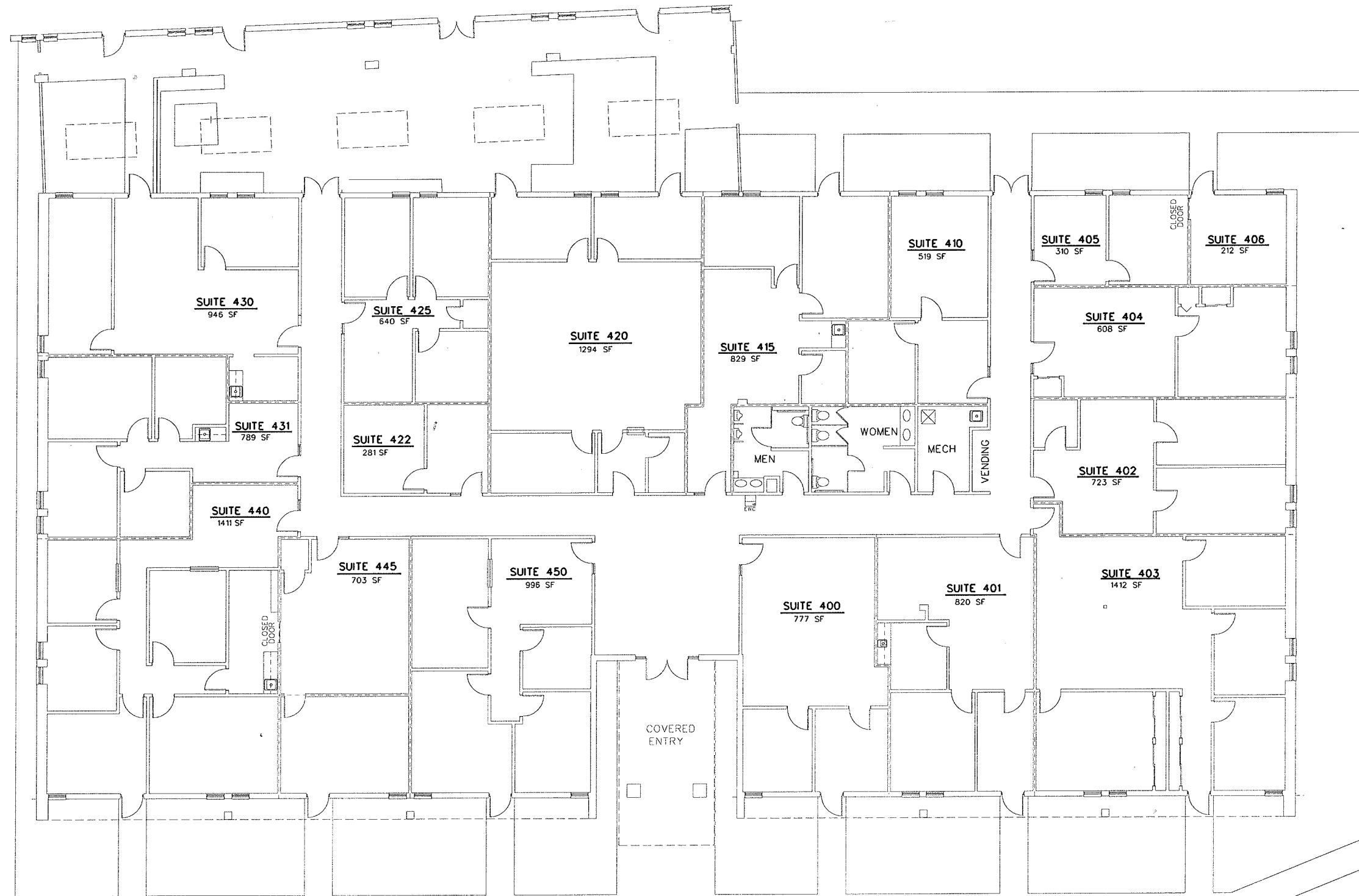


Paluxy Square Office Complex - Bldg. 3
The Genecov Group
 Smith, County
 Tyler, Texas

PROJECT: PALUXY SQUARE
BUILDING: 3
DRAWN BY: KDP
DATE: 02/07/11
RE. NO.: 1627
REVISION:
SHEET: EXISTING PLAN

A3
 SHEET 3 OF 5

© 2011 The Genecov Group
 No part of this drawing or any part hereof may be reproduced or transmitted in any form or by any means, electronic or mechanical, including photocopying, recording, or by any information storage and retrieval system, without the prior written consent of the architect.



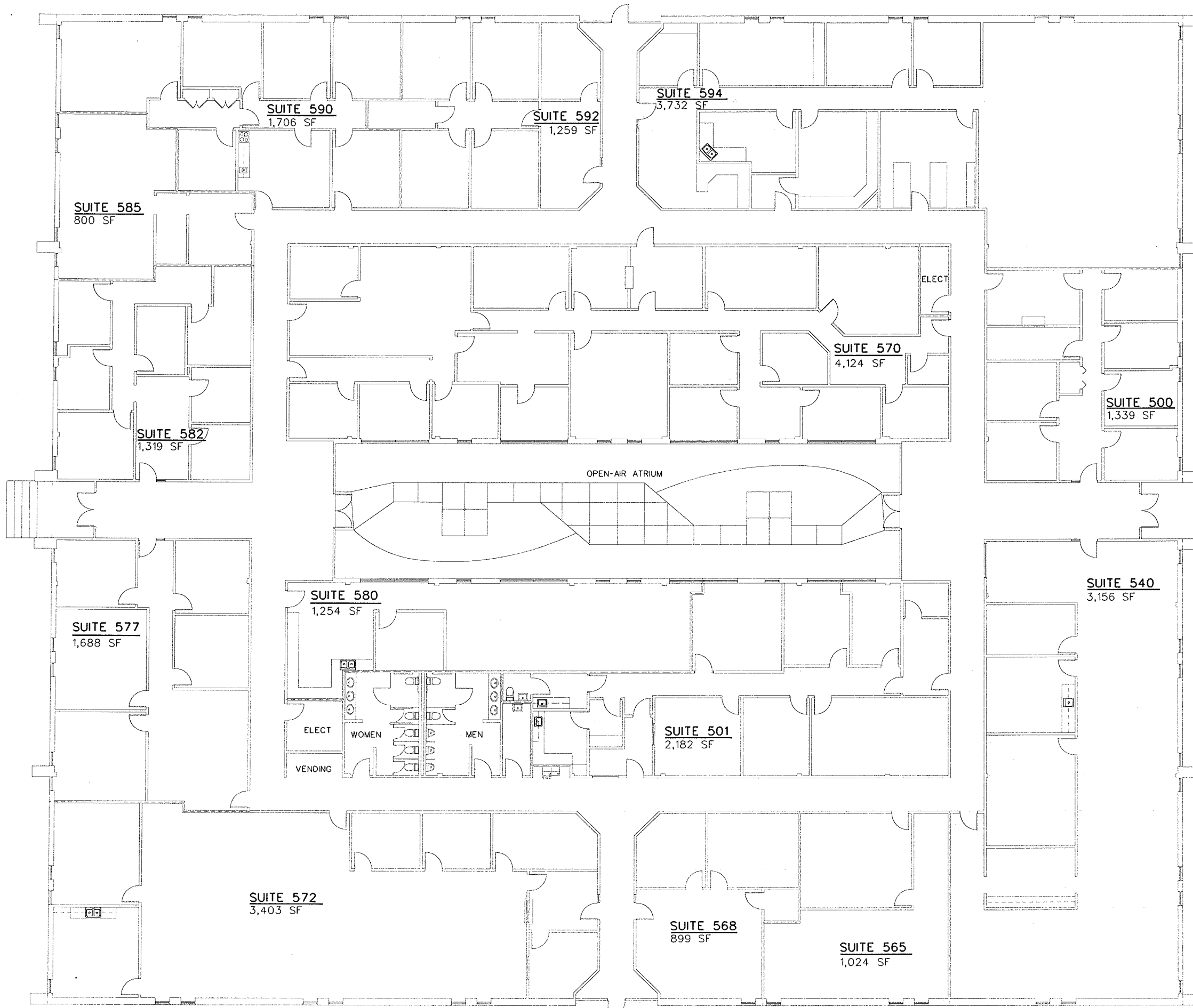
LEGEND	
SUITE 400	• 777 SF
SUITE 401	• 820 SF
SUITE 402	• 723 SF
SUITE 403	• 1412 SF
SUITE 404	• 608 SF
SUITE 405	• 310 SF
SUITE 406	• 212 SF
SUITE 410	• 519 SF
SUITE 415	• 829 SF
SUITE 420	• 1294 SF
SUITE 422	• 281 SF
SUITE 425	• 640 SF
SUITE 430	• 946 SF
SUITE 431	• 789 SF
SUITE 440	• 1411 SF
SUITE 445	• 703 SF
SUITE 450	• 996 SF
TOTAL	• 13270 SF
BUILD. TOTAL	15600 SF

A400 BUILDING FOUR- FLOOR PLAN

SCALE: 1/4" = 1'-0"

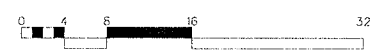
UPDATED 7/27/2018





LEGEND	
SUITE 500	1339 SF
SUITE 502	2182 SF
SUITE 540	3156 SF
SUITE 565	1024 SF
SUITE 568	899 SF
SUITE 570	4124 SF
SUITE 572	3403 SF
SUITE 577	1688 SF
SUITE 580	1254 SF
SUITE 582	1319 SF
SUITE 585	800 SF
SUITE 590	1706 SF
SUITE 592	1259 SF
SUITE 594	3732 SF
TOTAL	27885 SF
BUILD. TOTAL	33083 SF

A500 BUILDING FIVE- FLOOR PLAN



THE GENECOV GROUP
 OIL & GAS • REAL ESTATE
 P.O. BOX 132460 TYLER, TEXAS 75713-2460
 (903)509-8844 (903)509-8866 FAX



PALUXY SQUARE OFFICE COMPLEX - BLDG. 5
The Genecov Group
 Smith County
 Tyler, Texas

PROJECT: PALUXY SQUARE	
BUILDING V	
DRAWN BY:	KOP
DATE:	05/30/17
JOB NO.:	
REVISION:	
SHEET: EXISTING PLAN	

A5

SHEET 5 OF 5

© 2017 The Genecov Group. All rights reserved. No part of this document may be reproduced without written consent of the copyright owner.