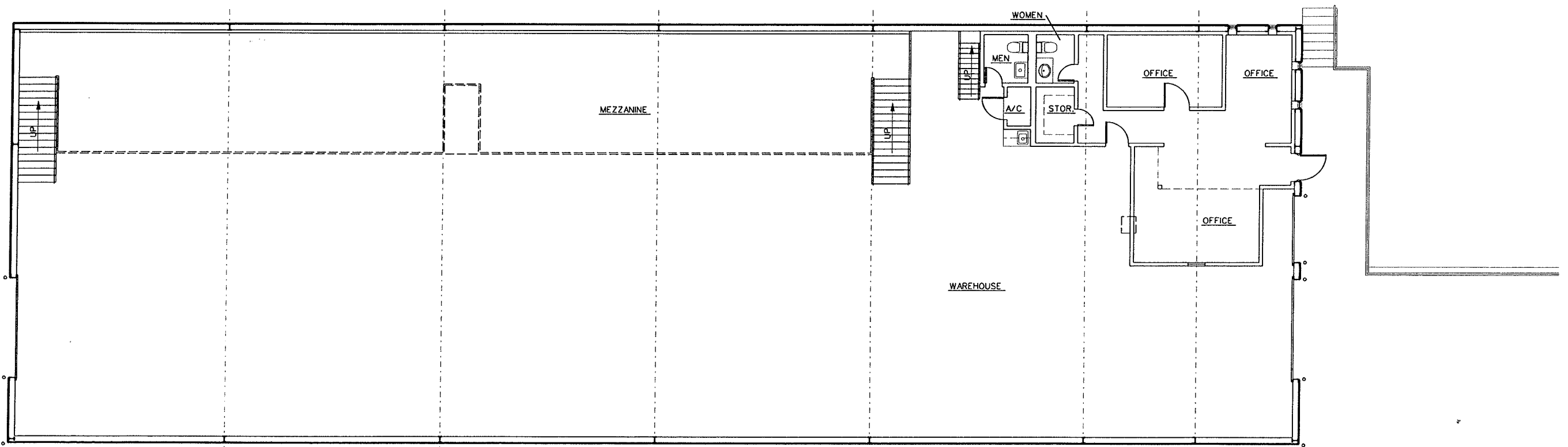


A101 EXISTING MEZZANINE FLOOR PLAN
 SCALE: 1/2" = 1'-0"
 PLAN NORTH



A100 EXISTING FLOOR PLAN
 SCALE: 1/2" = 1'-0"
 PLAN NORTH

THE GENECOV GROUP
 OIL & GAS • REAL ESTATE
 P.O. BOX 132450 TYLER, TEXAS 75715-2450
 (903)509-8844 (903)509-8866 FAX



EXISTING FLOOR PLAN
Bergfeld Warehouse
 Tyler, Texas Smith County

PROJECT: CNTAS	
907 BERGFELD	
DRAWN BY: KDP	
DATE: 02/11/16	
RE NO.: 197	
REVISION:	
SHEET:	

© 2016 The Genecov Group. All rights reserved. No part of this document may be reproduced or transmitted in any form or by any means, electronic or mechanical, including photocopying, recording, or by any information storage and retrieval system, without permission in writing from the Genecov Group.

A1
 SHEET 1 OF 1